



WELCOME TO HISTORIC TREASURE ISLAND

The Friends of Treasure Island (FTI) a 501c3 organization and the Treasure Island Camp Staff (TICS) both all-volunteer organizations, wants you to enjoy your weekend with us. If you have questions or need anything, please ask one of the TICS and we will do our best to accommodate. **WE HIGHLY RECOMMEND YOU PACK AS IF THIS IS A BACKPACKING TRIP. MOVING HIGH VOLUMES OF GEAR TAKES TIME AND SLOWS DOWN THE CHECK-IN/OUT PROCESS.**

DIRECTIONS:

1. **Our Location – “Dear Ole Treasure Isle...that Camp along the Delaware”:**
Treasure Island Camp
575 River Road (Ranger House)
Pipersville, PA 18947
Google Maps: [Treasure Island Camp Ranger House](#)
2. From South: As you head north from Point Pleasant, PA (about 3.5 miles) on River Road (Rt 32) along the Delaware Canal, you will come to the uphill south driveway entrance of our main parking lot on the left. Orange cones and burning tiki torches mark the entrance to the driveway. If you get to the Ranger House, you have gone too far. If you go by the Ranger House, turn around in the Delaware Canal Park parking lot and go back to the driveway. **(See ANNEX 1: PARKING)**
3. From North: Head south from Frenchtown, NJ, bridge (about 4.1 miles) on River Road (Rt 32) you will come to the north driveway entrance of the Ranger House. **DO NOT enter here.** Proceed south of the Ranger House and turn into the uphill south driveway entrance of the main parking lot on the right. Orange cones and burning tiki torches mark the entrance to the driveway.

PARKING: YOU MUST SHARE THIS INFORMATION AND MAP WITH YOUR DRIVERS.

CARPOOL, CONVOY, and ARRIVE TOGETHER. PARKING IS LIMITED. NO CHECK-IN OR MOVEMENT OF GEAR UNTIL ALL ARE PRESENT. LATE ARRIVALS PARK IN REMOTE LOTS. IF RUNNING LATE CALL HANK (410.340.9907) OR NATE (215.840.4756) (See ANNEX 1: PARKING)

1. **ALL VEHICLES ENTER THE MAIN TI PARKING AREA FROM THE SOUTH ENTRANCE.**
2. **CARS / SUVS:** Park in the main TI Parking Area next to the Ranger House off River Road.
3. **PICKUP TRUCKS / VANS:** Drive into the main lot to be directed to the north exit to unload. From there you will be directed to overflow parking pull off north of the Ranger House **(See ANNEX 1 and ANNEX 1 A).**
4. **DROP OFFS:** Pull into our main lot from the south entrance. Tell the TI Staff member in the lot that you are dropping off. Drive through the lot to the north entrance to unload and drop off. **YOU MUST EXIT THE LOT AFTER DROP OFF.** No loitering with your vehicle in the main lot.
5. **TRAILERS: NO TRAILERS WILL PARK IN OUR LOT due to capacity.** If you bring a Trailer, **YOU MUST NOTIFY US IN ADVANCE** and follow these instructions. Pull into our main lot from the south entrance. The TI Staff member in the lot will direct you to drive through the lot to the north entrance to unload. From there you will be directed to overflow parking in the Marshall Island Parking Area (primary). On rare weekends you may be directed to the very remote parking lot at the Delaware Valley

“TI is like a trip to heaven without die’n”. Butts MacMillan

The Friends of Treasure Island and Treasure Island Camp are not in any way affiliated with or operated by the Boy Scouts of America, BSA or any BSA Council.

Volunteer Fire Company, 75 Headquarters Road, Erwinna, PA 18920. Make sure the driver pulling the trailer has the map and address to put into GPS. **(See ANNEX 1 and ANNEX 1A)**

6. **CANOE TRAILERS:** Drive to, park, and off load in the Marshall Island Parking Area. Paddle to the island. **(See ANNEX 1)**
7. **OVERFLOW PARKING PULL OFF:** For trucks and vans. Just north of the Ranger House, about 350 yards on the left, on an angle, as close to the hill as possible. **(See ANNEX 1).**
8. **ALL LOTS:** Pull in and park HEAD ON. Facing either the river or the PA hillside. Follow the Parking Lot Staff directions.
9. Park as close to each other as you can. There are no marked spots.

CHECK-IN FRIDAY ARRIVAL:

1. Check-In begins at 5:00 PM. Please arrive no earlier than 5:00 PM and NLT 8:00 PM. **If you are delayed and not going to make your arrival time or will arrive later than 8:00 PM call Hank: 410.340.9907 or Nate: 215.840.4756**
2. **CONVOY AND ARRIVE AT CAMP AS A GROUP!**
3. Do not unload any gear until you have been directed to do so by the TICS.
4. The TICS will direct the adult and youth leader to Ranger House for Check-In.
5. **YOU MUST PROVIDE A HARD COPY OF YOUR CAMPER ROSTER AT CHECK-IN.**
6. If you have campers arriving on Saturday, list them on your Roster in advance and coordinate their arrival with the TICS.
7. Once you complete Check-In the TICS will direct your SPL how and where to move your equipment.
8. **Water is not available on the island. There is a water point at Ranger House on the PA side. FILL ALL WATER CONTAINERS BEFORE YOU ARRIVE.**
9. While your group is off loading your gear from the barge on the TI landing your TICS Guide will move with your SPL to your campsite.
10. Once all your gear is off the barge you may begin moving to your campsite **(See ANNEX 2: TI MAP)** under your SPLs direction.
11. Attend Friday Night Leaders Meeting. Time and place to be announced at check-in.

CHECK-IN SATURDAY ARRIVAL:

1. Check-In begins at 7:30 AM ends at 8:00 AM. Please arrive no earlier than 7:30 AM and NLT 8:00 AM.
2. If you are delayed, not going to make your arrival time or later than 8:00 AM call Hank: 410.340.9907.
3. See steps 3 – 10 above.

CHECK OUT:

1. **CHECK OUT BEGINS AFTER THE INTERFAITH WORSHIP SERVICE.**
2. Early Check Out must be coordinated with the Camp Director at the Friday Night Leaders Meeting.
3. Check Out procedures discussed at the Friday Night Leaders Meeting.
4. An adult or junior leader must go with the TICS Guide and walk the campsite to ensure there is no trash and the campfire is completely out.
5. Pick up all trash on trails to and from the campsite.
6. Clean the latrine, get supplies from the QM.
7. Leave a wood pile for the next camping group and stack all wood to include and logs used as seats around the fire in a pile by the lean-to.
8. Move gear to the TI landing at indicated time on Sunday.
9. Do not put any gear on the dock until you're told to do so.
10. Pack out and take home all non-burnable trash.
11. Load the barge at the direction of the TICS Barge Operator and depart the island.

SAFETY: Please ensure ALL follow these rules. FTI procedures are designed to ensure a safe camping trip. The TICS constantly monitors program and activities for safe operations. With the exception of archery all activities and program are unit run and the adult leaders' responsibility to supervise to ensure safety.

"TI is like a trip to heaven without die'n". Butts MacMillan

The Friends of Treasure Island and Treasure Island Camp are not in any way affiliated with or operated by the Boy Scouts of America, BSA or any BSA Council.

“All participants in official Scouting activities should become familiar with the Guide to Safe Scouting and applicable program literature or manuals, and be aware of state or local government regulations that supersede Boy Scouts of America practices, policies, and guidelines. The Guide to Safe Scouting is an overview of Scouting policies and procedures gleaned from a variety of sources. For some items, the policy statements are complete. Unit leaders are expected to review the additional reference material cited prior to conducting such activities.” Guide to Safe Scouting, February 2022 Revision, Preface, page vi.

1. **FOOTWEAR: NO WEARING OF OPEN TOE SHOES IN CAMP. OPEN TOE SHOES ARE DEFINED AS SANDALS, OR FLIP-FLOPS. NO INDIVIDUAL CAMPERS OR VISITORS ARE ALLOWED TO BOARD THE BARGE UNLESS THEY ARE WEARING SHOES OR BOOTS (ANY CLOSED TOE FOOTWEAR).**
2. No entry into buildings unless directed to enter by the TICS.
3. Boots for conservation and service projects are a MUST. We can't stress this enough!
4. Work gloves for projects are necessary.
5. Be aware of your surroundings at all times to avoid accidents.
6. If splitting wood in your site establish an Ax Yard.
7. Hammocks permitted, however, no hanging hammocks in any standing manmade structures.
8. No alcohol or illegal drugs in camp.

Aquatics Activities:

1. Camping groups must follow their governing body's policies and procedures (*) and have at minimum one qualified adult present at the activity for supervision in order to conduct any aquatics activity.
2. Swimming is permitted with qualified adult supervision only in the designated swim area near the TI docks.
3. **NO BARE FEET! ALL AQUATIC ACTIVITIES REQUIRE THE WEARING OF RIVER SHOES: WORKING, WADING WHEN FISHING, SWIMMING, TUBING, AND CANOEING.**
4. **RIVER SHOES ARE DEFINED AS “ANY TYPE OF CLOSED TOE FOOTWEAR”. NO EXCEPTIONS.**

() Scouts BSA units must follow the BSA Guide to Safe Scouting. FTI is ready to support your unit's requirements.*

EMERGENCY PROCEDURES:

Injuries:

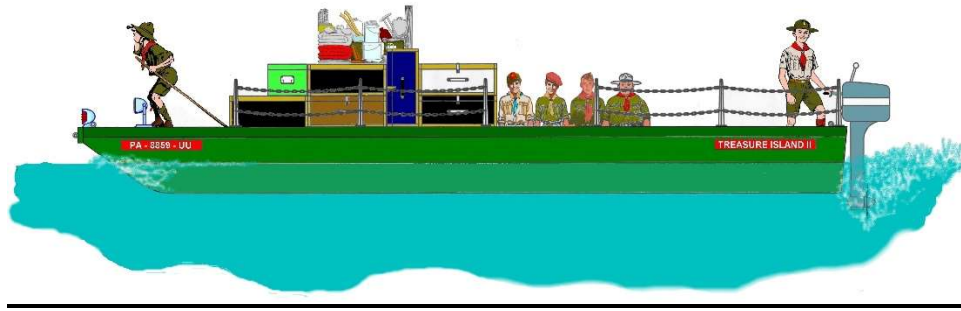
1. If required dial 911.
2. Give operator this location: Treasure Island Camp, 575 River Road, Pipersville, PA 18947.
3. Provide first aid.
4. Notify TICS, provide injury details.
5. The TICS medic will assess the condition of the patient and prepare for movement to the dock for transport across the river to the EMS.

Weather Issues:

1. In the event of severe weather, everyone is to move to the Dining Hall until the all clear is given.

“TI is like a trip to heaven without die'n”. Butts MacMillan

The Friends of Treasure Island and Treasure Island Camp are not in any way affiliated with or operated by the Boy Scouts of America, BSA or any BSA Council.



LOGISTICS:

Barge Schedule (Weather and river conditions permitting):

1. Friday night:
 - a. Runs start at 5:00 PM and continue until all campers are on the island.
2. Saturday: **IF YOU HAVE SATURDAY ARRIVALS PLEASE ENSURE THAT THEY ARRIVE IN TIME TO MAKE ONE OF THESE TIMES. THE SAME THING GOES FOR DEPARTURES FROM THE ISLAND. YOU MUST BE ON TIME FOR THESE RUNS. FUEL IS JUST TOO EXPENSIVE.**
 - a. 8:30 AM; 11:30 AM; 1:30 PM; 3:30 (Dedicated water run); 5:00 PM; 7:30 PM, and post campfire if required.

Latrines:

1. Latrines can be used by males or females unless otherwise marked.
2. Knock or ask if the latrine is in use before entering.
3. Respect everyone's privacy.
4. **Bring your own Toilet Paper. Some for sale in TP.**
5. Latrines get dirty between weekends. We have cleaning equipment at the QM.

Supplies:

1. **TENTS.** Bring your own tents! No platforms. We don't provide tents.
2. **ADIRONDACKS.** At least one Adirondack in each site. Some have more. Sites assigned based on headcount.
3. **TARPS/DINING FLY.** No shelters in sites. Bring tarps/dining fly's in case of rain.
4. **GORILLA CARTS.** Available for moving gear at the top of the TI landing.
5. **WATER.** Not available on the island. There is a water point at Ranger House on the PA side. Fill all water containers before you arrive. Refills at the Ranger House on the PA side during the weekend. Please note Barge Schedule.
6. **WOOD.** Do not bring wood. Plenty of wood to gather and piles of split wood on site.
7. **FIRE BUCKETS.** Pre-positioned in the sites.
8. **PICNIC TABLES.** Pre-positioned in sites.
9. **TRASH CAN.** Pre-positioned in sites. Bags available from QM.
10. **FIRE RING.** One in each site. Do not make another. No grates. Bring your own. Limited availability at QM
11. **TOOLS.** Available at the QM.
12. **CLEANING SUPPLIES FOR THE LATRINE.** Available at the QM.
13. **FORGOT SOMETHING?** Frenchtown, NJ, located north of TI, 4.1 miles (8 min). North on Rt. 32 (River Road), right at Frenchtown Bridge and your there.
 - a. Frenchtown Market (28 6th St, Frenchtown, NJ 08825)
 - b. CITGO Gas Station (36 Race St, Frenchtown, NJ 08825)

Ridge Trading Post:

1. Hours:
 - a. Friday: 5:00 PM - 9:00 PM

"TI is like a trip to heaven without die'n". Butts MacMillan

The Friends of Treasure Island and Treasure Island Camp are not in any way affiliated with or operated by the Boy Scouts of America, BSA or any BSA Council.

- b. Saturday: 8:00 AM - 12:00 PM; 1:00 PM - 4:00 PM; After Colors - 8:00PM; After Campfire - 10:00 PM
 - c. Sunday: 8:00 AM - 11:00 AM
- 2. Cash, check, or credit card.
 - 3. If you don't see it we don't have it.

Leave No Trace:

- 1. Use established fire pits.
- 2. TICS provides water buckets for fire suppression.
- 3. Burn all burnable items.
- 4. Take edible garbage as far away from your campsite as possible and bury.
- 5. **Pack out all non-burnable trash. This means take your trash bags home.**
- 6. Police your campsite and the trail(s) leading in and out.
- 7. Put your campfire out completely. Drown it, stir, and drown it again. Use river water.

Units in Camp Board Totem:

Before you get to camp please make a unit Totem similar to the one pictured to hang on the Units in Camp board. The board is located at the top of the TI steps towards the back of the flat ground adjacent to the Dining Hall. You can leave your totem with us for display in the Trading Post until you come back or take it home with you.

The totem should be made of wood but the design is up to you. Make sure your unit type (troop, pack, or crew) and number is prominently shown on the totem. The dimensions must be no more than 4.5" wide by 4" high. Note the hole in the top to hang on a small cup hook.



"TI is like a trip to heaven without die'n". Butts MacMillan

The Friends of Treasure Island and Treasure Island Camp are not in any way affiliated with or operated by the Boy Scouts of America, BSA or any BSA Council.

Remind

REMIND APP: NEW - Remind Announcements:

Please download the Remind App to your phone before the weekend. We will be using the Remind App during your camping weekend on TI to send out notices and reminders of upcoming program events or critical information.



Any Scout or Scouter can download the Remind App however it is of the utmost importance that all Adult and Jr. Leaders download the Remind App. We will provide the code for your weekend at Friday night check-in and during the leaders meeting.



"TI is like a trip to heaven without die'n". Butts MacMillan

The Friends of Treasure Island and Treasure Island Camp are not in any way affiliated with or operated by the Boy Scouts of America, BSA or any BSA Council.

TREASURE ISLAND CAMP PROGRAM SCHEDULE

Friday		Saturday		Sunday	
		6:30 AM	Reveille	6:30 AM	Reveille
		7:00 AM	Breakfast	7:00 AM	Breakfast
		7:45 AM	Morning Colors on Parade Ground	7:45 AM	Morning Colors on Parade Ground
		8:00 AM	Service/Conservation Report to QM - 8:30AM Archery / Canoe Session 1 Museum Open	8:00 AM	Interfaith Worship Service in Woodland Chapel
		9:00 AM	Archery / Canoe Session 2 Museum Open	9:00 AM	Museum Opens
		10:00 AM	SH Merit Badge @ Museum 10:00 AM Archery / Canoe Session 3 Museum Open	9:00 AM	Check Out Begins (9:00 AM - 12:00 PM) Archery Session 8 Canoe Session 10
		11:00 AM	Archery / Canoe Session 4 Museum Open	10:00 AM	Archery Session 9 Canoe Session 11
				11:00 AM	Archery Session 10 Canoe Session 12
		12:00 PM	Lunch	12:00 PM	All Troops Off TI
		1:00 PM	Service/Conservation Report to QM - 1:30PM Archery / Canoe Session 5 Museum Open		
ASAP		Staff Arrival	4:00 PM		
5:00 PM	Friday Night Check-in Barge Runs as Needed	5:00 PM	Archery Competition (3:45 PM - 5:00 PM) Canoe Session 8		
		6:30 PM	Canoe Session 9 Dinner		
		7:00 PM	Evening Colors on Parade Field (*)		
		8:00 PM	Assemble in Front of the Dining Hall to move to Ceremonial Grounds		
9:15 PM	Leaders Meeting / Cracker Barrel Pavillion Parade Ground	8:30 PM	Campfire Program in the Treasure Island Ceremonial Grounds		
		9:30 PM	Museum Open		
11:00 PM	TAPS - Quiet Time	11:00 PM	TAPS - Quiet Time		

(*) Evening Colors time announced at Friday Leaders meeting due to Daylight Savings Time. Class "A's" preferred. Orienteering Course, Scavenger Hunt, and Self Guided Tours available at the Ridge Trading Post.

"TI is like a trip to heaven without die'n". Butts MacMillan

The Friends of Treasure Island and Treasure Island Camp are not in any way affiliated with or operated by the Boy Scouts of America, BSA or any BSA Council.

FTI PROGRAM:

We offer a mini-summer camp program during your weekend. In fact, there is so much to do and see you have to plan your activities to reduce scheduling conflicts.

The 10AM and 2PM Conundrum. *Scouting Heritage Merit Badge, and special program offerings from Subject Matter Experts generally start at 10 AM and again at 2 PM.* Make sure you don't schedule your group to do archery and canoeing at 10AM and 2PM respectively or you will miss out on these program opportunities happening at the same time.

Subject Matter Experts (SMEs) Program: We try to get SMEs to come to TI and do informative and interactive presentations. If you are lucky enough to be camping when this program is available, you may have the chance to experience a Lenape or other living history presentation by reenactors portraying the lives and displaying the gear of military service members from the Revolutionary War through World War II. ***This program is not available every weekend.*** Details announced during the Friday Night Leaders Meeting.

MORNING AND EVENING COLORS (See ANNEX 3: PARADE FORMATION LOCATION PLAN):

- **Morning Colors**

- Saturday morning at 7:45 am.
- Please arrive on time to participate.
- Attendance is highly encouraged as there may be important information communicated to you for the events of the day.
- If your group would like to volunteer for color guard, please see the Program Director or Camp Director at the Friday evening leaders meeting.

- **Evening Colors**

- Saturday evening at 7:45 pm.
- Please arrive on time to participate.
- Attendance is highly encouraged.
- If your group would like to volunteer for color guard, please see the Program Director or Camp Director at the Friday evening leaders meeting or during the day on Saturday.



"TI is like a trip to heaven without die'n". Butts MacMillan

The Friends of Treasure Island and Treasure Island Camp are not in any way affiliated with or operated by the Boy Scouts of America, BSA or any BSA Council.

ARCHERY:

- To make reservations during your weekend go to: <http://www.friendsoftreasureisland.org/program-options/> Click on: Archery Range Reservations.
- Archery Secession = 1 hour. Cost per group = \$20.00 range fee plus \$5.00 / shooter. TICS Level 1 Archery Instructor provided.
- Open Shoot: Cost per participant = \$2.00 / 10 arrows.
- Youth Camp Wide Shoot: Free! Age groups:
 - 11-14 year old group
 - 15-18 year old group
 - One youth chosen from each group for each age bracket.
 - Winners receive TI Archer Award patches.
- Adult Camp Wide Shoot: Cost per participant = \$5.00
- All fees must be paid on the island by cash, check, or credit card.
- Archers earning a bullseye 🎯 receive an "I shot the Bull with Hank & Frank" patch.

Additional special archery programs include:

- Ace Archer: Awarded to the best of the best youth archer(s) during a camping weekend as part of a camp-wide shooting session.
- Black Border Bullseye: Available for purchase at the Trading Post by those youth who have shot a bullseye and a score of 25 points or more (5 arrows) on a single target.
- Gold Border Bullseye: Also available for purchase at the Trading Post by those youth who have scored 40 points or more (5 arrows) on a single target.
- I Shot the Bull with Hank & Frank: Awarded to adult archers who hit the bullseye during a camping weekend as part of a camp-wide shooting session.



"TI is like a trip to heaven without die'n". Butts MacMillan

The Friends of Treasure Island and Treasure Island Camp are not in any way affiliated with or operated by the Boy Scouts of America, BSA or any BSA Council.

AX THROWING:

- An axe throwing area is set up across from the archery range just off of the parade field.
- This program feature is meant to go on concurrently with a group's archery secession, as a large group may not be able to get all their members shooting at the same time.
- There is no cost to participate.
- Any group can participate in this activity regardless of signing up for archery.
- If the program area is free the supplies can be obtained at the archery range.
- Groups are self-supervised.

CANOE:

- FTI has 15 Old Town canoes and equipment available for use to canoe near the island.
- To make reservations during your weekend go to: <http://www.friendsoftreasureisland.org/program-options/> Click on: Canoe Reservations.
- Canoe Rental is \$10.00 per/hour per/canoe. **Groups must schedule canoeing in advance**, so we reserve enough for use.
- All rental fees must be paid on the island by cash, check, or credit card.
- Canoe rentals are subject to weather and river conditions, and will be decided day of the rental.
- Canoes are stored in the back of the Dining Hall and taken through the Boat House area to the river.

CANOE SAFETY:

- Camping groups must follow their governing body's policies and procedures (*) and have at minimum one qualified adult present at the activity for supervision in order to conduct any aquatics activity.
- A qualified/trained adult must act as "lookout" on the TI landing dock.
- The adult lookout must account for all canoers at the end of the session.
- Youth paddling the canoe must be swimmers. A beginner or non-swimmer may ride in center.
- Adult leaders are responsible to verify paddlers are qualified.
- All participants must wear a PFD.
- **All participants must wear River Shoes.**
- No participants are to go south of the dock and must remain within sight of the lookout at all times.

() Scouts BSA units must follow the BSA Guide to Safe Scouting. FTI is ready to support your unit's requirements.*

SWIMMING:

- Camping groups must follow their governing body's policies and procedures (*) and have at minimum one qualified adult present at the activity for supervision in order to conduct any aquatics activity.
- Swimming is permitted with qualified adult supervision only in the designated swim area near the TI docks.
- **NO BARE FEET! RIVER SHOES MUST BE WORN (ANY TYPE OF CLOSED TOE FOOTWEAR). NO EXCEPTIONS.**

() Scouts BSA units must follow the BSA Guide to Safe Scouting. FTI is ready to support your unit's requirements.*

"TI is like a trip to heaven without die'n". Butts MacMillan

The Friends of Treasure Island and Treasure Island Camp are not in any way affiliated with or operated by the Boy Scouts of America, BSA or any BSA Council.

FISHING WITH TREASURE ISLAND CHARTERS BY FTI:

- Welcome to Treasure Island Charters by FTI.
- Available on Saturdays-8:00-9:00 am and 9:00-10:00 am.
- Sign up will be at Friday night leaders meeting or immediately after morning colors on Saturday.
- Cost is \$5/youth.
- 10 persons per time slot not including the Captain. Helpful if one adult comes aboard to help provide 2-deep leadership.
- The adult fishes for free.
- Climb aboard the FTI barge for a one hour fishing excursion with one of our qualified Captains and fishing guides.
- You can bring your own fishing poles/tackle or rent one of ours (fee to be determined).
- We bring you up river just a short distance and get you into better fishing waters.
- Fishing trips are river condition dependent and there is no guarantee to your catch!



SCAVENGER HUNT:

- Have fun exploring the island while on a camp wide scavenger hunt.
- Get a taste of the island's history, meet the staff, and maybe complete some rank requirements.
- Complete any 10 of the 14 finds, post to Instagram #friendsoftreasureisland, have a staff member validate your finds, and win a prize!
- You will be recognized at the Saturday night campfire.
- Scavenger Hunt instructions can be picked up at the Ridge Trading Post.

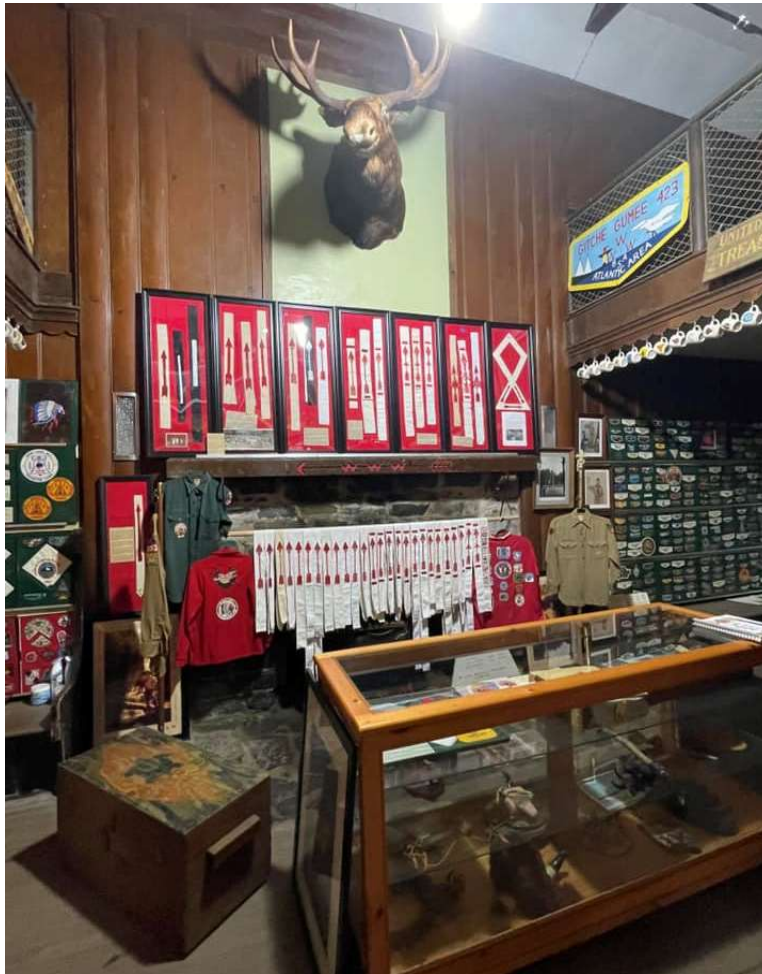
"TI is like a trip to heaven without die'n". Butts MacMillan

The Friends of Treasure Island and Treasure Island Camp are not in any way affiliated with or operated by the Boy Scouts of America, BSA or any BSA Council.

ORIENTEERING COURSE PROGRAM:

- This self-initiated, multi-point orienteering course is available throughout the day.
- Permanent orienteering markers located on prominent landmarks as well as off-trail.
- Bring their own compass but we may have some loaner compasses if needed.
- Please pick up maps with instructions from the TICS at the Pavilion on the Parade Ground.
- We have maps available at camp.

GOODMAN-EDSON MUSEUM: The museum offering the largest collection of historic memorabilia east of the Mississippi River, is located in Unami Lodge. It holds a plethora of “treasures” from patches to long forgotten items used on TI. Open during the hours shown in the Treasure Island Camp Program Schedule (above), youth can take advantage of this opportunity to meet our Museum Director to see and hear about our vast collection. If you’d like to donate any memorabilia to the museum, bring it with you and discuss your donation with the Director. All donated items are tax deductible and will have good secure home with FTI.

**SCOUTING HERITAGE MERIT BADGE:**

- Counselors available most weekends however, staff dependent.
- The badge cannot be completed in a single weekend but our counselors can work with youth virtually to complete the requirements.
- You are welcome to come up for the day any time during one of our scheduled camping weekends to complete the badge.

"TI is like a trip to heaven without die'n". Butts MacMillan

The Friends of Treasure Island and Treasure Island Camp are not in any way affiliated with or operated by the Boy Scouts of America, BSA or any BSA Council.

FFINGERPRINTING MERIT BADGE:

- Counselors available most weekends however, staff dependent.
- The badge can be completed in a single weekend.

CONSERVATION / SERVICE PROJECTS: Projects announced at the meeting. Saturday morning secession: 8:00AM – 11:30AM. Saturday afternoon secession: 1:00 PM – 4:30 PM.

FTI expects activities to be conducted safely. We have project opportunities that suit all ages and skill levels. You determine how many hours you want to put into the project. Please coordinate with the TICS and we will work with you to fill your need. Our skilled foresters work with your youth to explain and teach about why the project is important so the project is much more than just work. Materials and tools are on site unless we put out a request for special tools. Boots for conservation and service projects a MUST. Bring work gloves and all the energy you can muster.

GAGA Pit: Gaga is a fast paced, high energy sport played in an octagonal pit. The more players the better! Dubbed a kinder gentler version of dodge ball, the game is played with a soft foam ball, and combines the skills of dodging, striking, running, and jumping, while trying to hit opponents with a ball below the knees. Players need to keep moving to avoid getting hit by the ball. Fun and easy, everyone gets a serious workout.

SATURDAY NIGHT FUN CAMPFIRE: A camp wide campfire is held every Saturday evening. Attendance and participation are highly recommended. This is the icing on the cake for your weekend. The campfire is an experience you will never forget with skits and songs from campers and staff. Fun, fellowship, and an all-out good time. **Held rain or shine! If rain the location is the Dining Hall.**

SUNDAY MORNING POLAR PEEPER PLUNGE: Join the Treasure Island Camp Staff in a new Sunday morning tradition! Come to the beach by the TI docks at 6:30am on Sunday morning to enjoy a quick dip in the cool refreshing waters of the mighty Delaware. All participants will receive a Polar Peep Plunge souvenir.

SELF-GUIDED TOUR: Books for a self-guided tour are available on request in the Ridge Trading Post. The TICS cannot take groups on tours unless time and work schedule permits.

FTI VOLUNTEER CAMPAIGN AND RECOGNITION PROGRAM CRITERIA (See ANNEX 4: SERVICE) FTI encourages all youth and adults who camp on historic Treasure Island to dedicate a portion of their time toward service or conservation projects. FTI implemented a recognition program to honor the service rendered to restore and maintain Treasure Island. FTI, and the camping group track hours.

IMPORTANT INFORMATION: FTI MAKES YOUR WEEKEND POSSIBLE WITH VOLUNTEERS AND MONEY DONATED FROM OUR SUPPORTERS. HELP US DEFRAY THE COSTS OF SUPPLIES BY BECOMING A MEMBER OF FTI OR BY MAKING A MONETARY OR GIFT-IN-KIND DONATION.

"TI is like a trip to heaven without die'n". Butts MacMillan

The Friends of Treasure Island and Treasure Island Camp are not in any way affiliated with or operated by the Boy Scouts of America, BSA or any BSA Council.

FTI MEMBERSHIP INFORMATION: (See ANNEX 5: FTI MEMBERSHIP FORM) Please consider joining so we can continue to offer these free camping weekends.

JOIN THE TREASURE ISLAND CAMP STAFF (TICS): We need more dedicated volunteers to join the TICS. **Without a staff we will not be able to run our expanding program for a future generation.**

To become a member of the all-volunteer, weekend Treasure Island Camp Staff (TICS) you must apply and be accepted.

The TICS:

- Manages and supports activities during weekend functions.
- Commits to staffing selected weekends as a requirement for membership.
- Commits to cross training in order to create a high performing staff.

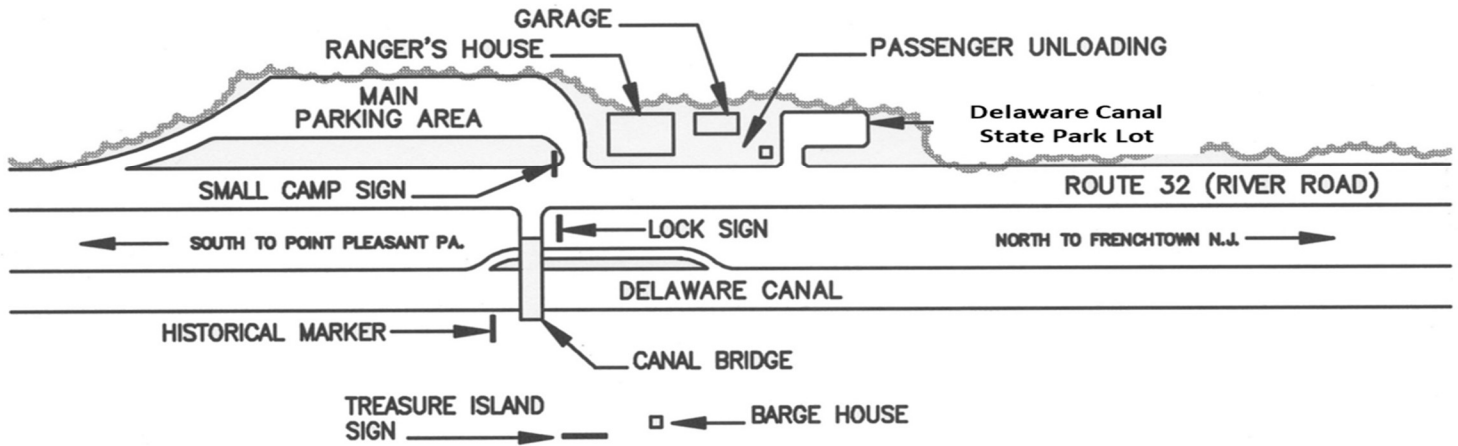
The TICS core competencies include:

- Operate and staff camp during events, camping weekends, and other activity weekends.
- Provides camp facilities management, leadership, and support of weekend operations.
- Provides, when required, leadership to conservation / service projects, and program management staff.
- Conducts opening and closing weekends to prep and close TIC for the program year.

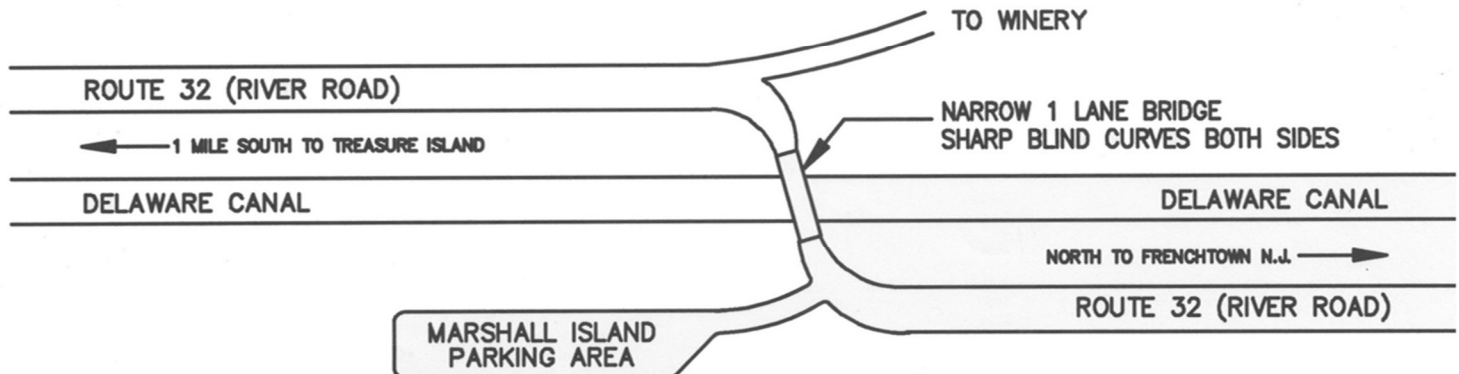
The TICS is a great opportunity to serve on historic Treasure Island. YOU can be a part of the magic and, “the rebirth of a national treasure”. If this is something that you want to do apply today to join our team. Talk to our Camp Director, Nate, or Program Director Anthony (JT) for an application or more details. Nate: nathanb@friendsoftreasureisland.org Anthony: alorenzoni@comcast.net

FTI Camper Satisfaction Survey (See ANNEX 6: FTI CAMPER SATISFACTION SURVEY): Our staff is dedicated to making sure your stay with us is a mountain top experience. To that end we want to deal with any issues or questions you or any member of your camping group has before you leave TI. It’s hard to make corrections once you leave and we read about something we could have fixed while you were on the island. Please bring any criticisms or complaints to our attention immediately so that we can explain ourselves or correct the issue. Some things may be impossible to resolve but at least give us the chance.

HAVE A SAFE JOURNEY HOME: The Friends of Treasure Island hope you had a great weekend! We thank you for all the work you did for the “Rebirth of a national treasure” and for camping with us. Please come back soon to camp with us.

ANNEX 1: PARKING**TREASURE ISLAND PARKING AREA**

All trailers must park in the Marshall Island Parking Area for the weekend, after unloading. You can drop the trailer and drive back for parking in the pull off or have a vehicle follow you and bring the driver back.

MARSHALL ISLAND PARKING AREA

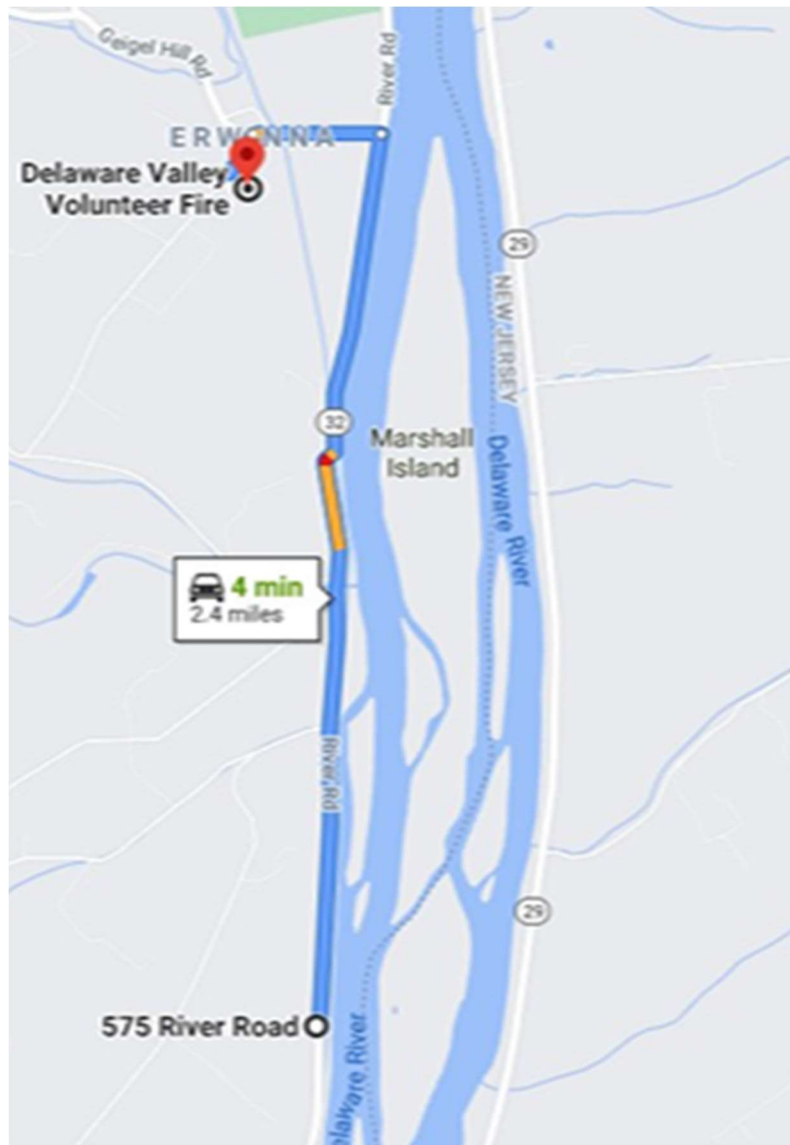
"TI is like a trip to heaven without die'n". Butts MacMillan

The Friends of Treasure Island and Treasure Island Camp are not in any way affiliated with or operated by the Boy Scouts of America, BSA or any BSA Council.

ANNEX 1A: OVERFLOW PARKING TRAILERS

We only coordinate for parking at the Delaware Valley Volunteer Fire Company when we know there is going to be a need.

When directed you will drive 2.4 miles, 4 min from Treasure Island, 575 River Road, Tinicum Township, PA to Delaware Valley Volunteer Fire Company, 75 Headquarters Road, Erwinna, Pennsylvania 18920

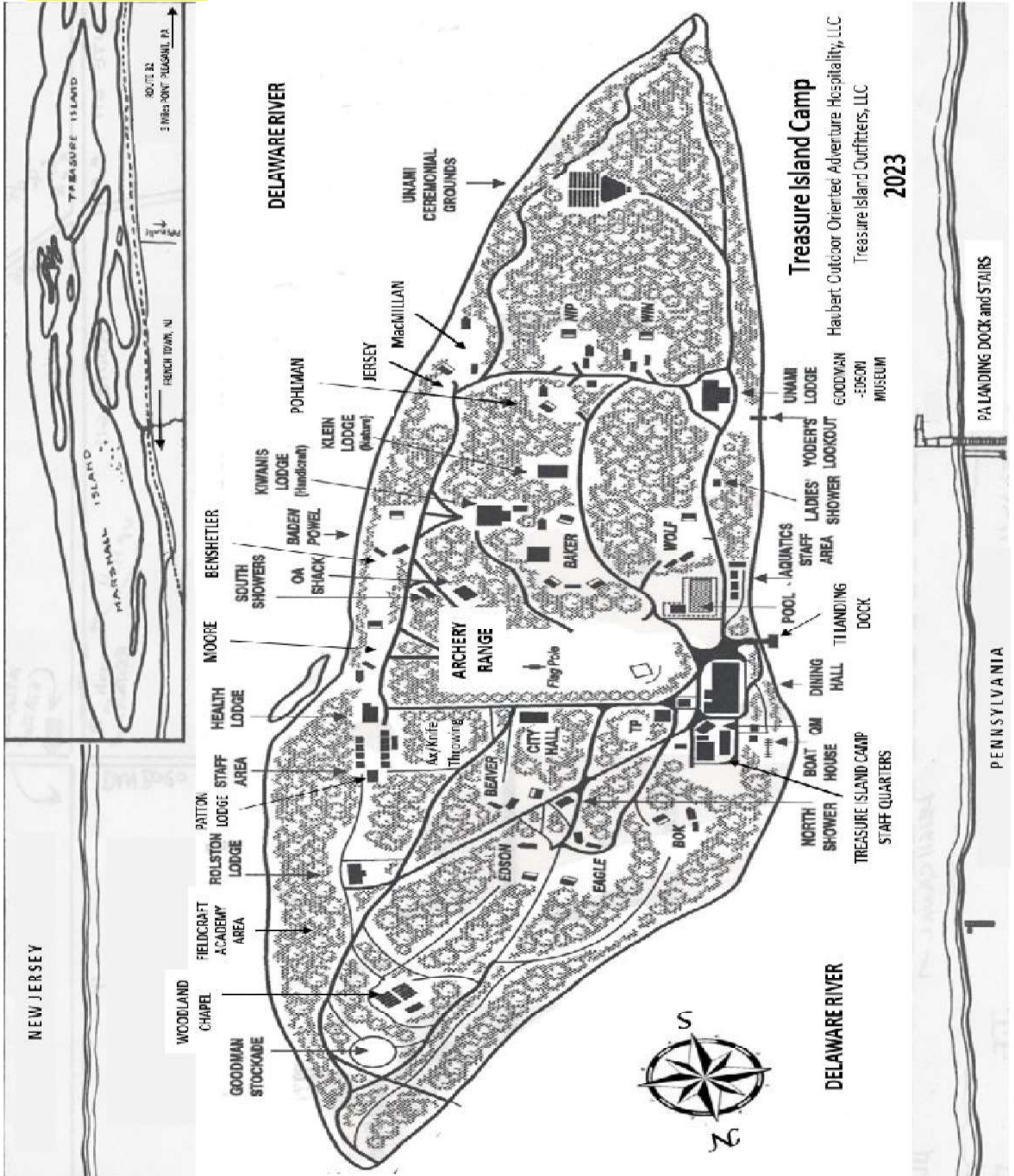
**Directions:**

1. Head north on PA-32 N toward E Dark Hollow Rd 2.1 mi
2. Turn left onto Headquarters Rd 0.3 mi
3. Turn left to stay on Headquarters Rd Destination will be on the left 0.1 mi
Delaware Valley Volunteer Fire Company, 75 Headquarters Rd, Erwinna, PA 18920

"TI is like a trip to heaven without die'n". Butts MacMillan

The Friends of Treasure Island and Treasure Island Camp are not in any way affiliated with or operated by the Boy Scouts of America, BSA or any BSA Council.

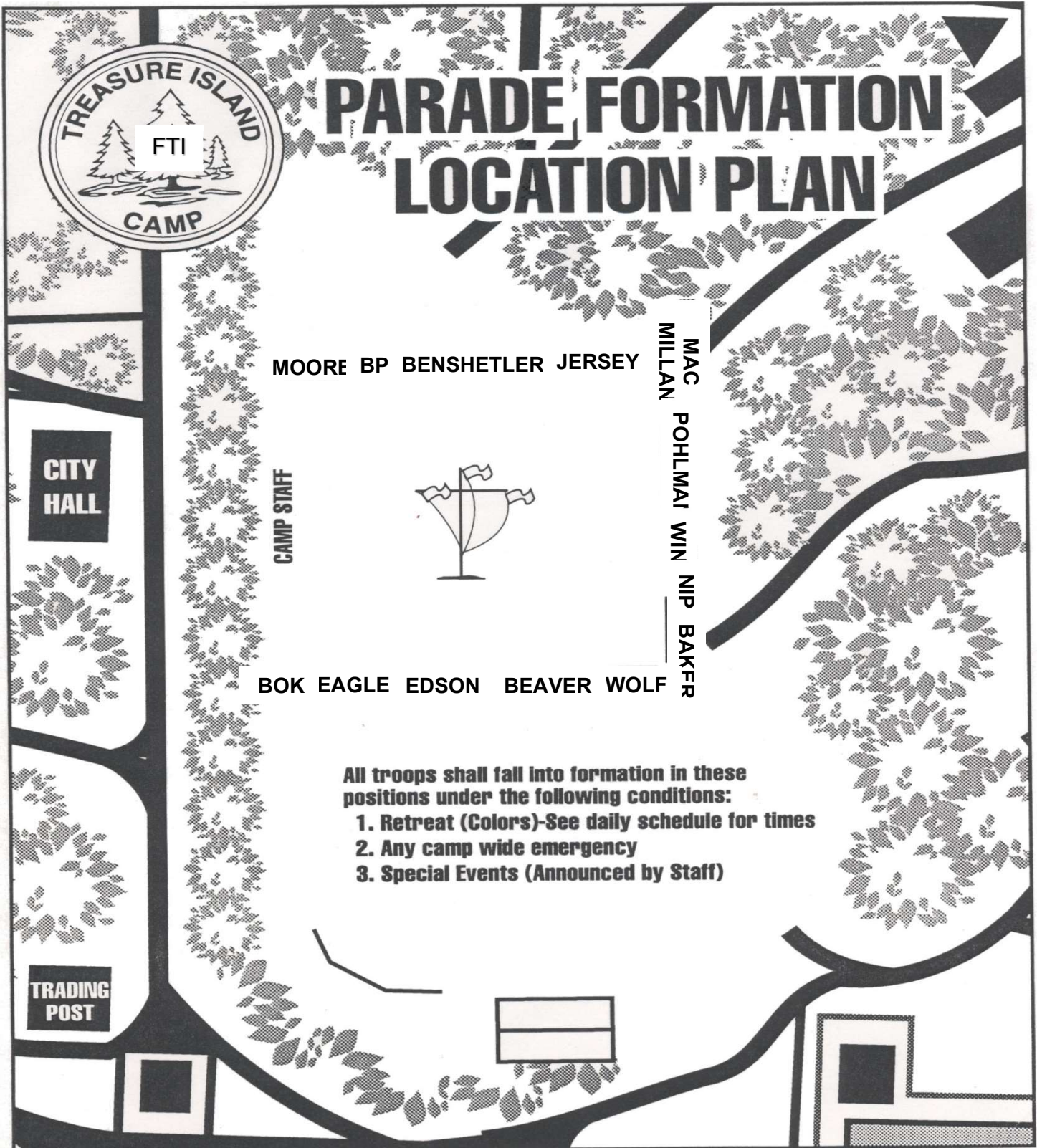
ANNEX 2: TI MAP



"TI is like a trip to heaven without die'n". Butts MacMillan

The Friends of Treasure Island and Treasure Island Camp are not in any way affiliated with or operated by the Boy Scouts of America, BSA or any BSA Council.

ANNEX 3: PARADE FORMATION LOCATION PLAN



"TI is like a trip to heaven without die'n". Butts MacMillan

The Friends of Treasure Island and Treasure Island Camp are not in any way affiliated with or operated by the Boy Scouts of America, BSA or any BSA Council.

ANNEX 4: SERVICE

FTI Volunteer Service Recognition Program

FTI encourages all youth and adults who camp on historic Treasure Island to dedicate a portion of their time toward a conservation or service project. These projects are not a requirement and never mandatory for no cost camping but we certainly encourage it as you have the opportunity to earn a free patch. FTI implemented a recognition program to honor the service rendered to restore and maintain Treasure Island.

Individual FTI Volunteer Service Recognition Program Criteria:

Recognition is provided at the end of the weekend.

You must track hours for youth and adults who:

- Complete three (3) hours of service or conservation project time on Treasure Island receive a FTI Volunteer patch.
- Complete ten (10) additional hours and receive a rocker denoting "10 Hours of Service".
- Complete fifty (50) additional hours and receive a rocker denoting "50 Hours of Service".
- Complete one hundred (100) additional hours and receive a rocker denoting "100 Hours of Service".
- Complete five hundred (500) total hours (500 hours = 5 - "100 Hours of Service" rockers) which means you have earned a full round of 100 hour rockers, plus the 63 hours already earned and you are automatically entered as a Lifetime member, and receive a Founder's patch.

Camping Group Service Recognition Program: Recognition of camping groups providing service on Treasure Island will be via a Service Recognition Board, erected on Treasure Island. This Service Recognition plaque is located in the Ridge Trading Post.

Tin: 100+ Hours: John Voelker once wrote, "...only in the woods can I find solitude without loneliness; because bourbon out of an old tin cup tastes better out there..." Of course, Treasure Island is an alcohol-free facility, but we cannot help but agree with the sentiment.

Aluminum: 250+ Hours: This is one of the most important metals for camping! We find Aluminum in pots, pans, pack frames, utensils, and even colanders.

Bronze: 500+ Hours: Trophies and challenge coins, plaques, and statues...all of these come in bronze. Are you up to the challenge of 500 hours?

Gold: 750+ Hours: Gold is a metal integral to multiple levels of our society and prized through the ages. The gold stands for warm sunlight, good cheer, and happiness.

Silver: 1,000+ Hours: Silver is also a metal that finds roots in many recognition programs and has been in use for currency all over the world.

Titanium: 1,500+ Hours: Titanium has the highest strength to weight ratio of any metal and used in some of the finest gear for high adventure treks when weight constraints play a vital role in the success and enjoyment of the trip. Treasure Island's rustic setting is the perfect place for a gear shakedown.

"TI is like a trip to heaven without die'n". Butts MacMillan

The Friends of Treasure Island and Treasure Island Camp are not in any way affiliated with or operated by the Boy Scouts of America, BSA or any BSA Council.

ANNEX 5: FTI MEMBERSHIP FORM

The Friends of Treasure Island and Treasure Island Camp are not in any way affiliated with or operated by the Boy Scouts of America, BSA, or any BSA Council.

Membership Options:

- ___ **Annual Individual Membership: \$35, includes an annual membership patch for the calendar year you join.**
- ___ **Annual Family Membership: \$100, includes up to 4 family members & four annual membership patches.**
- ___ **Lifetime Membership: \$300, includes a 4" Founder's patch and an annual patch for life and a discount on FTI gear.**
- ___ **Interested in donating items, email: HankW@friendsoftreasureisland.org**

www.friendsoftreasureisland.org

Name: _____

Address: _____

City: _____

State: _____ Zip Code: _____

Phone: _____

Email: _____

Please print the full names of additional family members on the back of the form if selecting the family membership option.

Send completed forms and funds to:

Bill Lewis

309 W. Beidler Road

King of Prussia, PA 19406

703.919.7248

Make checks out to **Friends of Treasure Island**

Email forms to: bill@friendsoftreasureisland.org

Send funds by PayPal: membership@friendsoftreasureisland.org

FTI is a 501(c) 3 non-profit and all membership fees are tax deductible

"TI is like a trip to heaven without die'n". Butts MacMillan

The Friends of Treasure Island and Treasure Island Camp are not in any way affiliated with or operated by the Boy Scouts of America, BSA or any BSA Council.

ANNEX 6: FTI CAMPER SATISFACTION SURVEY

Camping Group Type and Number: _____ Point of Contact Name: _____

Point of Contact Email: _____

Home base or Council: _____

What dates did you camp with us? _____

How did you hear about Treasure Island (TI)? _____

Did we communicate with you effectively? _____

Was this your first time camping on TI? Yes _____ No _____

If no, why did you choose TI? _____

Would you camp with us again next year? _____

What was the best part of the weekend? What will you always remember? _____

What could we change so that TI is even better for next year? _____

Was our staff polite and helpful? Yes _____ No _____

If no please explain so we can get better. _____

Did we meet your expectations? Is there anything we could have done differently? _____

Please submit via email.

"TI is like a trip to heaven without die'n". Butts MacMillan

The Friends of Treasure Island and Treasure Island Camp are not in any way affiliated with or operated by the Boy Scouts of America, BSA or any BSA Council.